

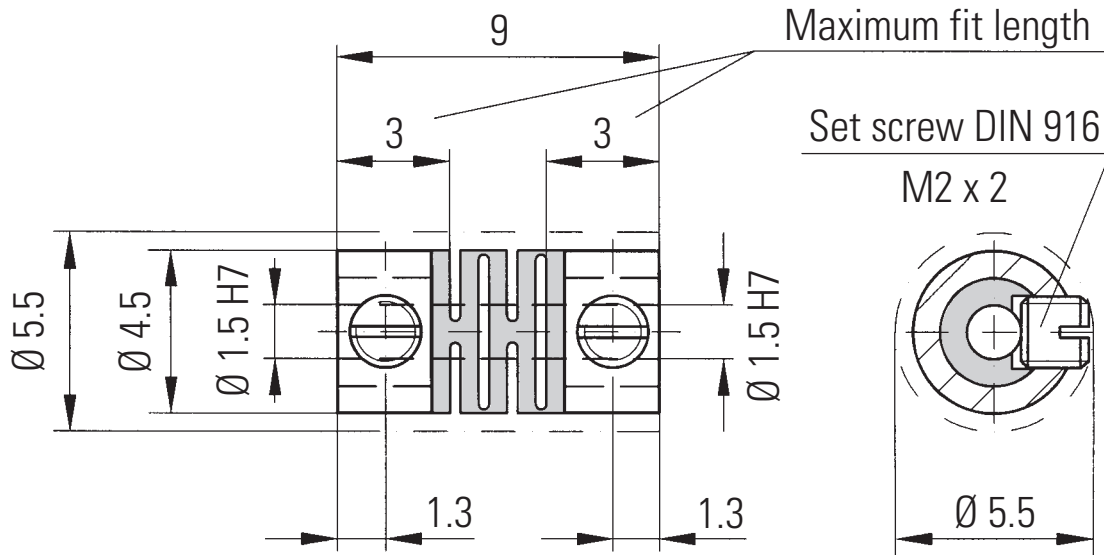
small + precise

MICROFLEX-COUPLINGS

Series FK 1



R+W[®]
COUPLING TECHNOLOGY



Coupling diameter is 4.5 mm, with the set screw the diameter is 5.5 mm.

Technical information

- Nominal torque capacity: 1 Ncm
- Maximum peak torque capacity: 2 Ncm
- Weight: 0.47 g
- Moment of inertia: 5.39 g/mm²
- Torsional rigidity: 23 Ncm/rad
- Max. lateral misalignment: 0.1 mm
- Max. angular misalignment: 1.5°
- Max. axial misalignment: 0.2 mm

Material

- Coupling material: Polyamid
- Hub material: stainless steel
- Bore diameter: 1.5 mm
- Radial clamping is achieved using a DIN 916 M2 x 2 set screw.

Product specifications

- Temperature range:** -50 bis + 120° C
- Backlash:** Absolutely backlash-free
- Speed range:** Up to 10,000 rpm

Order example

FK 1 001 / 9 / 1.5 / 1.5